

# International House Guide

(国際交流会館ガイド)

# International House

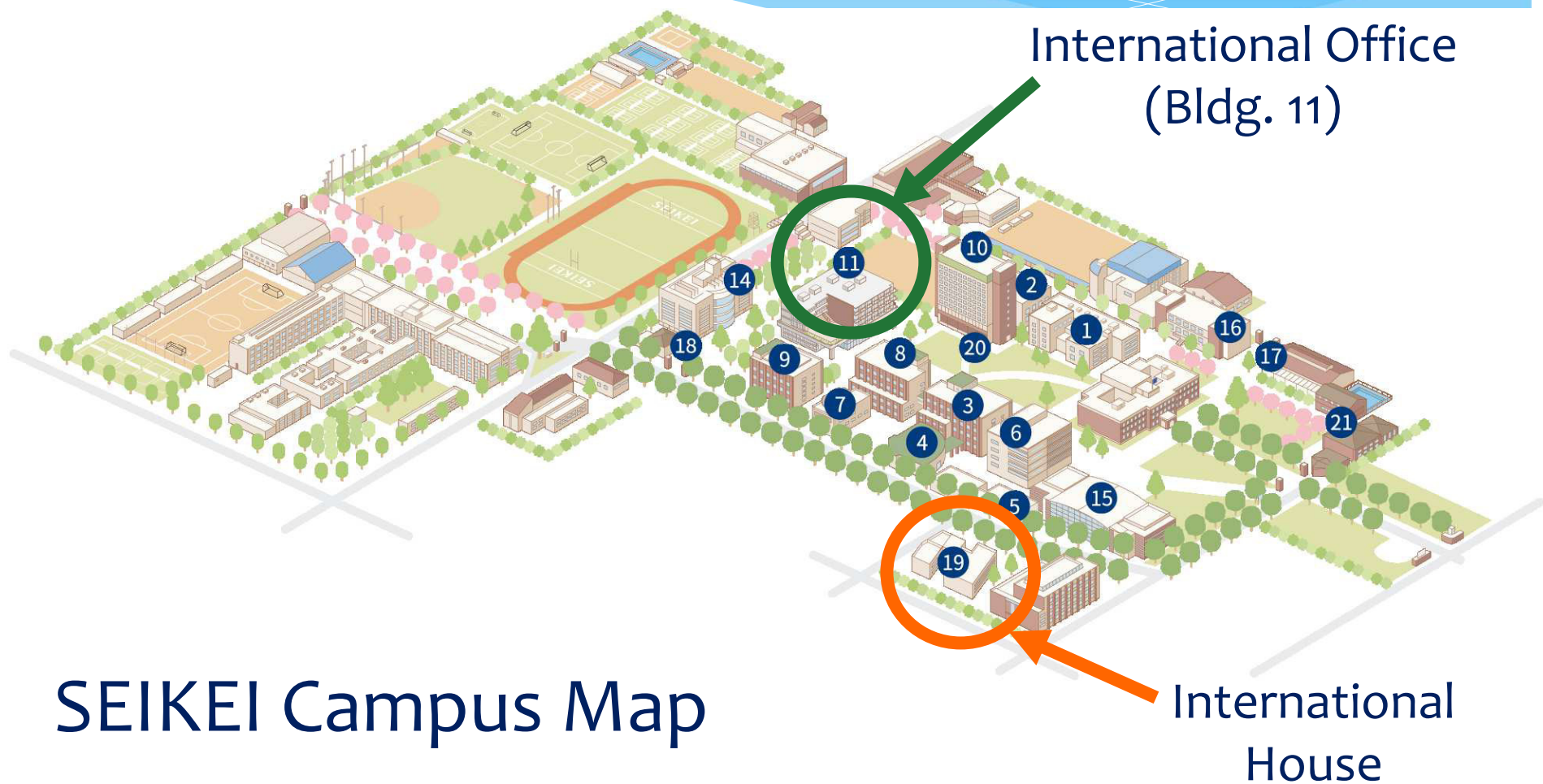
- ・国際交流会館は、教員棟と学生棟で構成されている宿舎です。

The International House consists of student wing and Faculty wing.

- ・学生棟には留学生とResident Assistant (RA; 成蹊大学の学生)が入居し、普段から国際交流ができます。

International students and Resident Assistants (RA; Seikei Students) reside in the student building, and international exchange takes place regularly.

# Location



# Interior/exterior



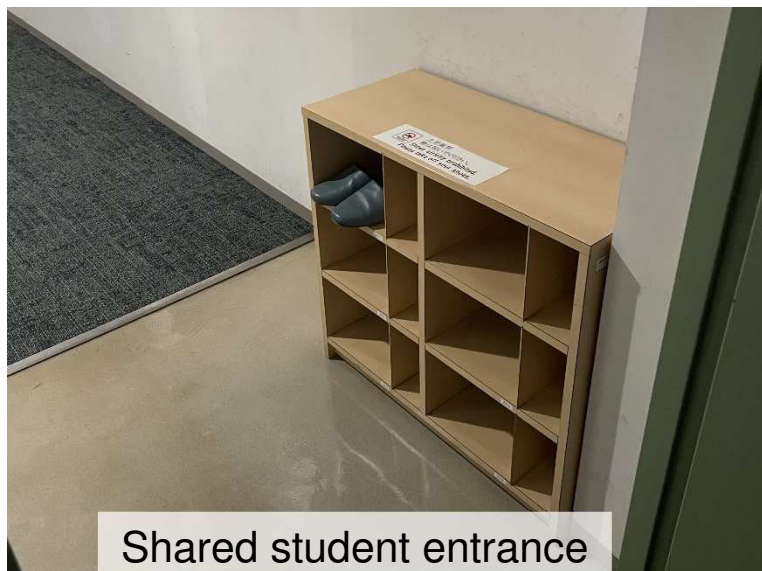
Exterior



Main Entrance



Dormitory Office

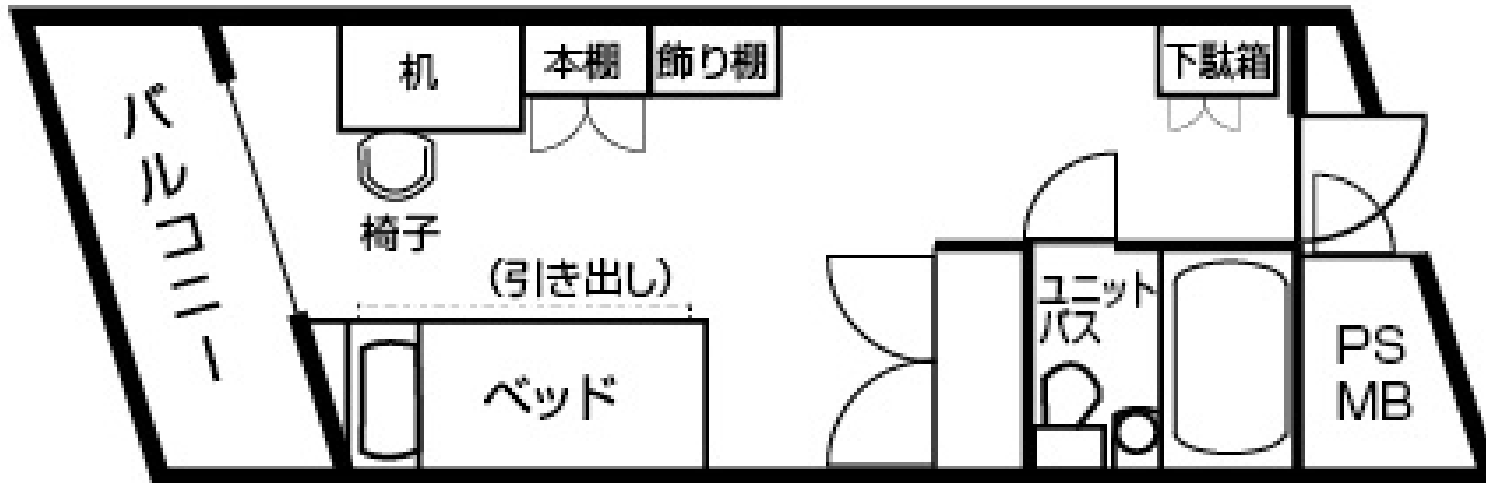


Shared student entrance



Common Room for Student

# Private room (20m<sup>2</sup>)



Private room



Private room



Private bathroom

# Private room (20m<sup>2</sup>)

## Available

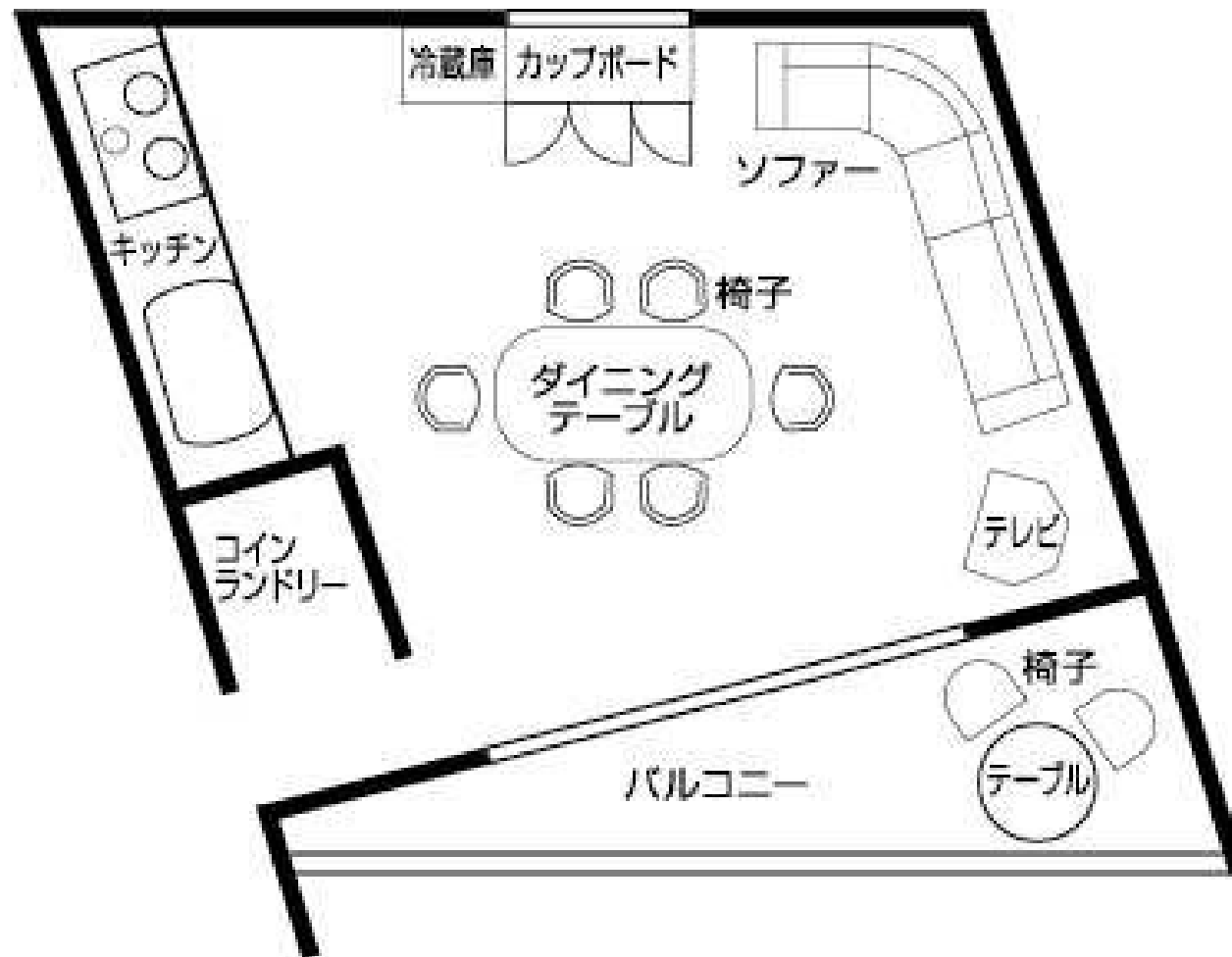
Unit-bathroom,  
Single bed,  
Desk & chair,  
Bookshelf,  
Wardrobe,  
Trash can,  
Shoe rack,  
Air conditioner,  
Interphone,  
Wi-Fi

## Option Required

Bedding & linen lease  
fee : ¥23,000~/year, ¥14,000~/semester  
\*prices for beddings are subject to change.



# Common Room for Student



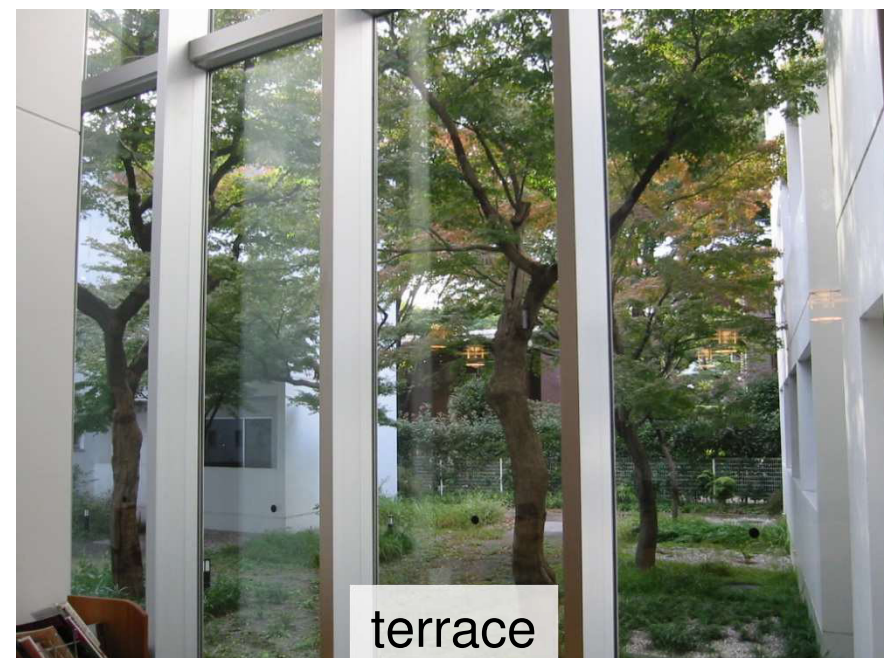
\*Five private rooms share one common room.



Kitchen in student  
common room



Laundromat



terrace



# Common Room for Student

## Available

Kitchen,  
Microwave,  
Toaster,  
Refrigerator,  
Cupboard,  
Dining table/ chair,  
TV,  
Air conditioner,  
Vacuum cleaner,  
Coin Laundries  
(Washing machine: ¥200/hour,  
Dryer: ¥200/hour)

## Prepare by yourself

Cookware,  
Tableware

# Residence Fee

- \* **Rent : ¥2,100/day**  
(Excluding meals, heat, light and water)
- \* **Deposit : ¥40,000 (Refundable)**
- \* **Bedding & linen lease fee : ¥23,000~/year, ¥14,000~/semester**  
(prices for beddings are subject to change)
- \* **Coin Laundries : Washing machine: ¥200/hour, Dryer: ¥200/hour**
- \* **Heat, light and water : Contracting on your own**  
(Reference: Approximately ¥8,000-¥10,000/month)
- \* **Meals : Preparing food for yourself**  
(Reference: Approximately ¥25,000-¥30,000/month)

# “The international house, Kokusaikouryu-kaikan” (国際交流会館)

## < Address >

3-6-35 Kichijoji-Kitamachi, Musashino-shi Tokyo, 180-0001 Japan

## <Access>

20-minute walk from Kichijoji station / 1-minute walk from Seikei University

## <Descriptions>

- All single rooms (20.00m<sup>2</sup>, Furnished)
- No meals, Kitchen available, Common Room for Student
- Resident manager on site  
(except Sundays, national holidays, and year-end and New Year holidays)
- Curfew : 00:00 – 06:30AM