

Submission Guidelines

Review of Asian and Pacific Studies (RAPS)

Review of Asian and Pacific Studies is published once a year (December) by Center for Asian and Pacific Studies. The review invites papers and articles of the scholars whose research interests lie in the Asia-Pacific region, and has published many high-quality papers in the fields of politics, economics, sociology, history, technology transfer and environmental problems in the region.

The Editorial Committee

Center for Asian and Pacific Studies
Seikei University
3-3-1 Kichijoji-kitamachi, Musashino-shi
Tokyo 180-8633
Japan
Tel: (+81)422-37-3549
Fax: (+81)422-37-3866
E-mail: [submission-caps\[at\]jc.seikei.ac.jp](mailto:submission-caps[at]jc.seikei.ac.jp)

Call for Papers

The Editorial Committee of Review of Asian and Pacific Studies welcomes all the articles that address the issues of politics, economy, society, culture, history, technology transfer, and environmental problems in the Asia-Pacific region. Papers should be within 10,000 words in English or 24,000 characters in Japanese, including tables, figures, footnotes, bibliography and references. Text and endnotes should be written on a word processor such as Microsoft Word in double-spaced in A4-paper (or equivalent of this form). An abstract within 300 words (written in English) should be attached at the time of submission.

Papers should be submitted by e-mail to [submission-caps\[at\]jc.seikei.ac.jp](mailto:submission-caps[at]jc.seikei.ac.jp) and by mailing a printed copy of the manuscript to the Editorial Committee (for the address, see above). After refereeing by independent referees, the editorial committee will notify the author(s) its decision concerning publication within approximately four months after receiving the paper.

Manuscript Format

I. HEADING

1. Title Heading:

Title of the paper, Author's name(s), Affiliation, and e-mail address on separate lines.
e.g.)

<p>*sample</p> <p>Stock Variations and Capital Ratios of 21 Major Japanese Banks</p> <p>Chikara Komura</p> <p>Faculty of Economics, Seikei University</p> <p>E-mail: komura@econ.seikei.ac.jp</p> <p>and</p> <p>Soon Jin Kwon</p> <p>Faculty of Economics, Hagi International University</p> <p>E-mail: sj-kwon@tokyo.email.ne.jp</p>

2. Each chapter:

Each chapter should be given a number, I, II, III, and so on

The introductory part should be I. Introduction. Use subheadings as follows.

- * First subheading: 1, 2, 3, 4, and so on
- * Second subheading: (1), (2), (3), (4), and so on
- * Third subheading: a, b, c, d, and so on

II. FOOTNOTES AND REFERENCES

All items cited in the body text and footnotes should be listed in References.

Citations should take the form: Author's surname Name (Year, Page number if necessary).

Footnotes should not be used except when unavoidable.

e.g.)...

Nash (1950) shows General Equilibrium Theory.

Or...

had been shown as General Equilibrium Theory (Nash, 1950).

1. Footnotes

* Notes on author's identification and acknowledgements should be placed as the first footnote without any footnote mark.

* Notes should be consecutively numbered 1, 2, 3, and so on throughout the article.

2. References

♦ **Basic form of references is as follows:**

Author. Year. Title. Place of Publication: Publisher.

A succession of works by the same author is treated as follows:

The name is given for the first entry and an eight-space for subsequent references.

The order is by year of publication.

e.g.)...

Eliot, T. S. 1920. *The Sacred Wood*. London: Methuen.

_____. 1922. *The Waste Land*. New York: Harcourt.

Items published in the same year are distinguished by adding letters a, b, c, and so on after the year of publication.

e.g.)...

Eliot, T. S. 1920a. *The Sacred Wood*. London: Methuen.

_____. 1920b. *The Waste Land*. New York: Harcourt.

Edited works follow written works.

Co-authored works follow edited works.

♦ **Books: Author(s). Year of publication. Title. Place of publication: Publisher.**

Single author: surname, given name(s).

e.g.)...

Basu, Karen. 1984. *The Less Developed Economy*. London: Basil Blackwell.

e.g.)...

Lyon, Mary, Bryce Lyon, and Henry S. Lucas. 1983. *The Wardrobe Book of William*

de Norwell. Brussels: Commission Royale d'Histoire de Belgique.

♦ **Edited work: author, ed.**

e.g.)...

von Hallberg, Robert, ed. 1989. *Canons*. Chicago: University of Chicago Press.

♦ **Monograph in a journal: Journal Name, Volume, Number: Page.**

e.g.)...

Scott, J. 1991. "Politics" *Political Review*, Vol.6, No.1: 26-38.

♦ **Monograph in a book: In Editor's Name, ed. Book Title. Place of publication: Publisher: Page.**

e.g.)...

Patel, S. 1997. "Nest of Vipers." In V. Singh, ed. *Renewal in Indian Politics*. Bangalore: Karnataka Academic Press: 389-416.

♦ **Thesis: Institution.**

e.g.)...

Kim, S. Jin. 1996. "Power and Product." Master Thesis, Seoul University.

♦ **Article in newspaper or magazine: Newspaper/Magazine title, Volume or Month-Date**

e.g.)...

The Daily Yomiuri. 1998. "If the Market Balloon Bursts, U.S. Economy May Bubble on. April 30.

III. EQUATIONS AND FORMULAS

When equations or formulas are included in the paper, variables should be in italic. If the variable is mentioned in the body text or in tables, it should also be in italic.

e.g.)...

$$u_2(t) = c_1 u_1(t) + e_2(t)$$

IV. FIGURES AND TABLES

Figures and tables should be consecutively numbered, and the number given at the top of a table and the bottom of a figure. The unit must be specified, as must the source (if the figure or the table is your own, state this). Use N/A for unknown data. e.g.)...

(Table Sample)

Table 1. Smokers and Nonsmokers, by Sex

	Smoke	Don't Smoke	Total
Males	1,258	N/A	N/A
Females	1,194	2,752	3,946
Total	2,452	2,752	3,946

Sources:.....

Notes:.....

(Figure Sample)

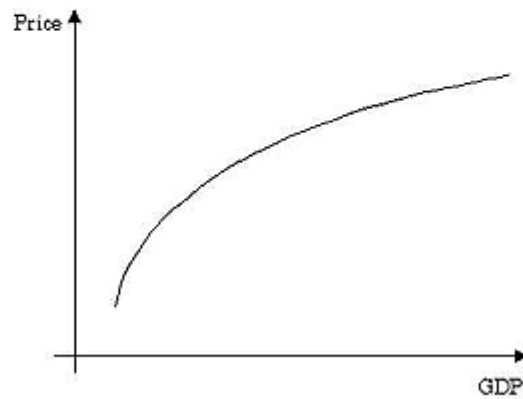


Figure 2. Relationship of GDP and Price

Source:.....

Notes:.....